

42/74

74

# PLAT OF ATLANTIS PINES

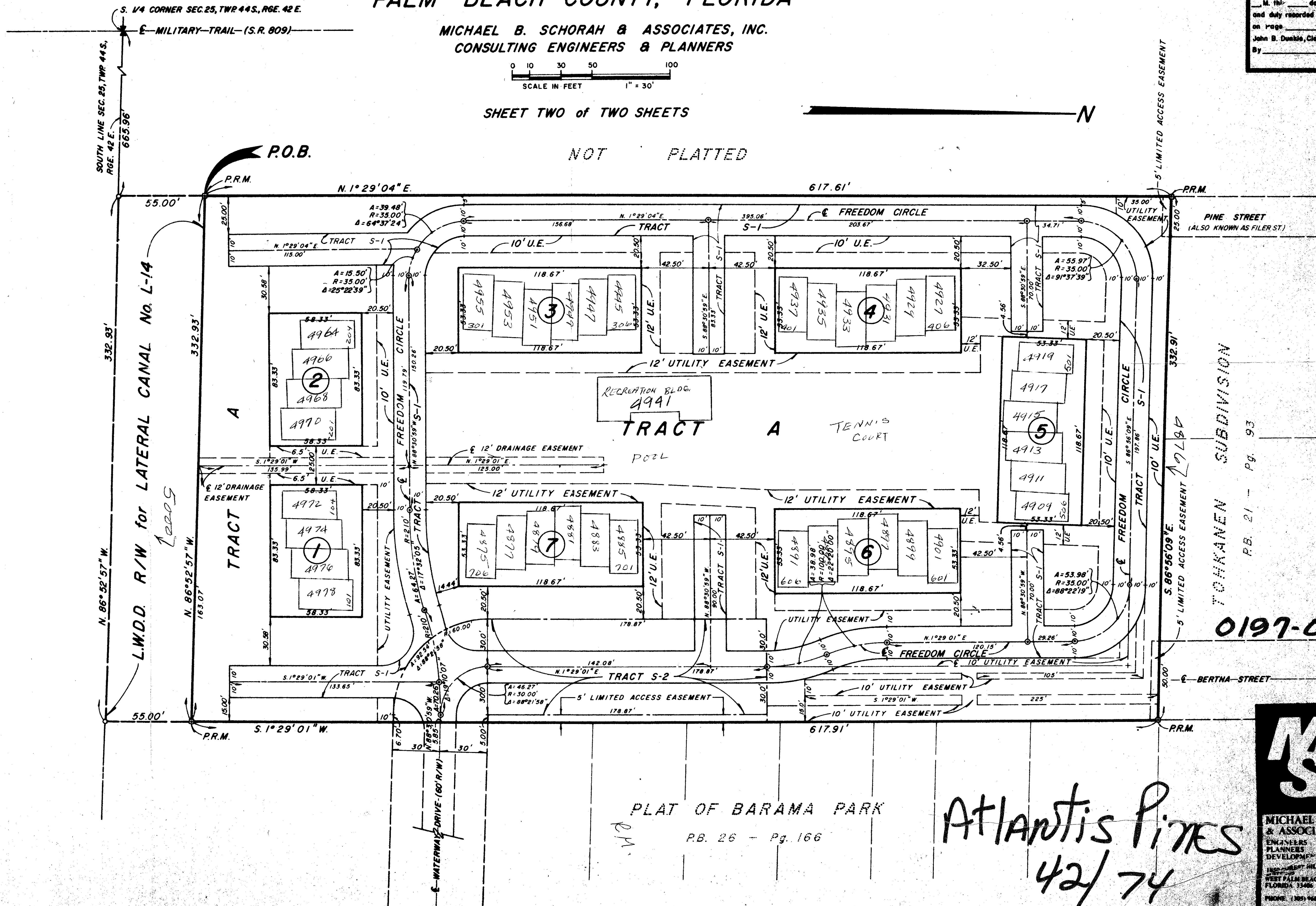
A PORTION OF THE WEST 1/2 OF THE SOUTHEAST 1/4 OF THE SOUTHWEST 1/4 OF THE SOUTHEAST 1/4 OF SECTION 25, TOWNSHIP 44 SOUTH, RANGE 42 EAST PALM BEACH COUNTY, FLORIDA

MICHAEL B. SCHORAH & ASSOCIATES, INC.  
CONSULTING ENGINEERS & PLANNERS



SHEET TWO of TWO SHEETS

STATE OF FLORIDA  
COUNTY OF PALM BEACH  
This Plat was filed for record at \_\_\_\_\_ M. 10<sup>th</sup> day of \_\_\_\_\_ 19\_\_\_\_ and duly recorded in Plat Book No. \_\_\_\_\_ on Page \_\_\_\_\_  
John B. Dunkle, Clerk (Circuit Court)  
By \_\_\_\_\_ D.C.



NOT PLATTED

N

L.W.D. R/W for LATERAL CANAL No. L-14

1200'S

TOKKANEN SUBDIVISION

P.B. 21 - Pg. 93

0197-000

PLAT OF BARAMA PARK

P.B. 26 - Pg. 166

Atlantis Pines  
42/74